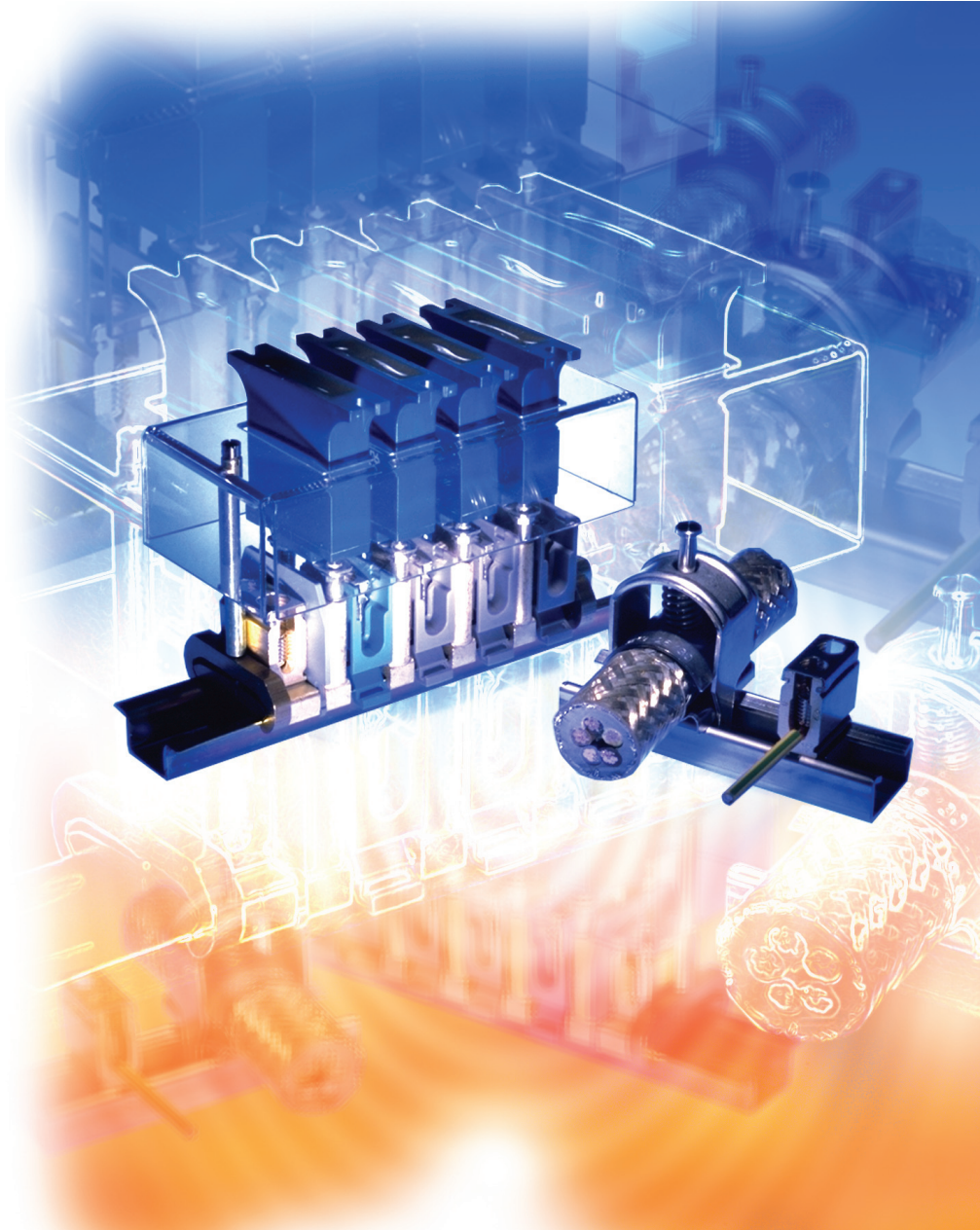


# ELECTROMAGNETIC

  
**woertz**



## COMPATIBILITY

Woertz AG  
Hofackerstrasse 47, P.O. Box 948, CH-4132 Muttenz 1, Switzerland  
Phone ++41 (0)61 466 33 33, Fax ++41 (0)61 461 96 06  
[www.woertz.ch](http://www.woertz.ch)

Woertz USA  
151 Discovery Drive, Unit 111  
Colmar, PA 18915  
Phone (215) 997 8855, Fax (800) 522-3868  
[www.woertz-usa.com](http://www.woertz-usa.com), e-mail: [woertz1@erols.com](mailto:woertz1@erols.com)

**3.1**

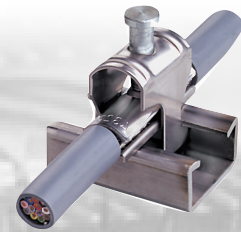
**Passive EMC**



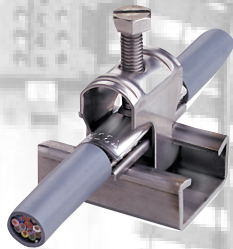
Shielding terminals  
of hardened aluminium alloy  
with bolt and with spring  
to rails 4384  
Series 43701  
page 3.1.3



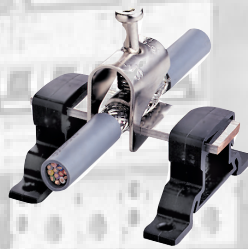
Shielding terminals  
of hardened aluminium alloy  
with bolt and with spring  
to rails 4382, 4383, 80291  
Series 43711  
page 3.1.4



Shielding terminals  
of stainless steel A4  
with bolt and with spring  
to rails 4382IN, 4383IN  
Series 43730  
page 3.1.5



Shielding terminals  
of stainless steel A4  
with screw and with spring  
for rails 4382IN, 4383IN  
Series 43230/F  
page 3.1.6



Shielding terminals  
of nickel-plated brass  
with bolt and with spring  
for busbar 18x3 mm  
Series 43741  
page 3.1.7

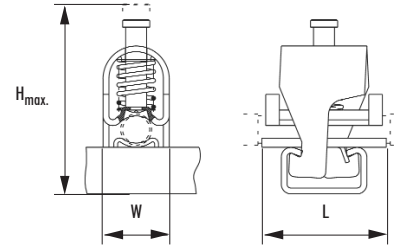
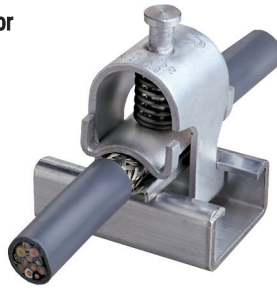
# Shielding terminals of hardened aluminium alloy

to profile bar No. 4384



- with clamping screw and spring
- profile bar No. 4384 is used as busbar
- bare cable, uncover shielding part
- same principle as cable fixing brackets
- with spring of steel that makes the electrical contact without damaging the shield

Cannot be used for fastening cables!



**Mounting:** Place the base plate diagonally on the profile bar. Put the bared shielding part of the cable on the base plate. Then push the shielding terminal on the cable shielding and fasten the base part of the terminal on the profile bar by rotating it. When the shielding terminal is released, the spring provides the pressure necessary for the contact.



## Article numbers

Shielding terminals with base plate	43701	43702	43703	43704	43705	43706



## Technical data

	mm	7-11	9.5-13.5	12.5-16.5	15.5-20.5	19-27	26-34
shield $\varnothing$	mm	7-11	9.5-13.5	12.5-16.5	15.5-20.5	19-27	26-34
W	mm	17	22	26	32	39	48
L	mm	32	32	32	32	32	35
H <sub>max.</sub>	mm	49	54	58.5	66.5	73	84
spring pressure	N	14-24	20-35	28-47	70-95	85-107	105-130
Packing unit	pcs	50	50	50	50	50	50



## Accessories

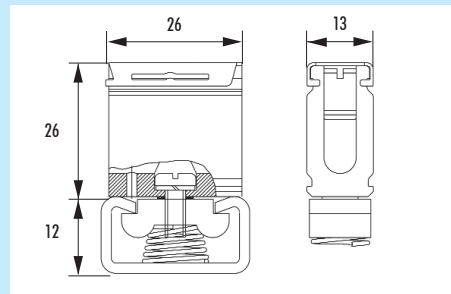
### Earthing terminals

If a separate grounding is needed, an insulated mounting of the rail has to be made with the rail holder No. 4048. A special earthing terminal is then required for the connection to the profile bar No. 4384.



80160

- Nominal cross-section 16mm<sup>2</sup> (AWG 6)
- Terminal of brass
- Anchoring stud of galvanized steel
- Clamping screws of nickel-plated brass, slotted
- With sliding cover of stainless steel, for through conductors
- Packing unit 50 pcs



80160



UL 467 Short-Time-Current-Test

1530A during 6sec.

**Rail holder**  
of thermosetting plastic, light grey



4048

20 x 63 x 11 mm

Packing unit 60 pcs

4048

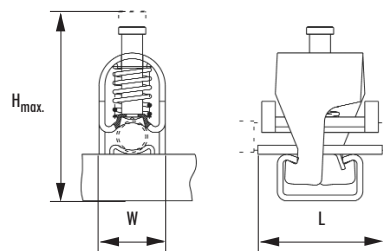
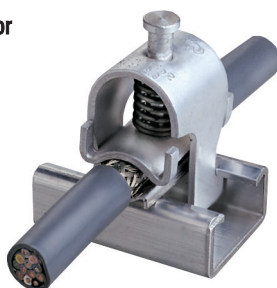
# Shielding terminals of hardened aluminium alloy

to profile bars No. 4382, 4383 and 80291



- with clamping screw and spring
- profile bars are used as busbars
- bare cable, uncover shielding part
- same principle as cable fixing brackets
- with spring of steel that makes the electrical contact without damaging the shield

Cannot be used for fastening cables!



**Mounting:** Place the base plate diagonally on the profile bar. Put the bared shielding part of the cable on the base plate. Then push the shielding terminal on the cable shielding and fasten the base part of the terminal on the profile bar by rotating it. When the shielding terminal is released, the spring provides the pressure necessary for the contact.

## Article numbers

Shielding terminals with base plate

43711      43712      43713      43714      43715      43716

## Technical data

	mm	6-10	8.5-12.5	11.5-15.5	14.5-19.5	18-26	25-33
shield $\varnothing$	mm	6-10	8.5-12.5	11.5-15.5	14.5-19.5	18-26	25-33
W	mm	17	22	26	32	39	48
L	mm	32	32	32	32	32	32
H <sub>max.</sub>	mm	49	56	60.5	69	75	88
spring pressure	N	17-27	25-41	36-56	68-120	73-132	78-140
Packing unit	pcs	50	50	50	50	50	50

## Accessories

**Earthing terminals**  
If a separate grounding is needed, an insulated mounting of the rail has to be made with the rail holder No. 4048.



80170

Special earthing terminals are then required for the connection to the profile bars No. 4382, 4383 and 80291.

- Terminals of brass
- Anchoring studs of galvanized steel
- Clamping screws of nickel-plated brass, slotted
- With sliding cover of stainless steel, for through conductors
- Packing unit 25 pcs

Nominal cross-section      mm<sup>2</sup>  
W x L x H                      mm

80170/16

16 (AWG 6)  
13 x 26 x 26

80170/50

50 (AWG 2)  
17 x 34 x 30



UL 467 Short-Time-Current-Test

1530A during 6 sec.

3900A during 6 sec.

**Rail holder**  
of thermosetting plastic, light grey



4048

20 x 63 x 11 mm

Packing unit 60 pcs

4048  
158 975 517

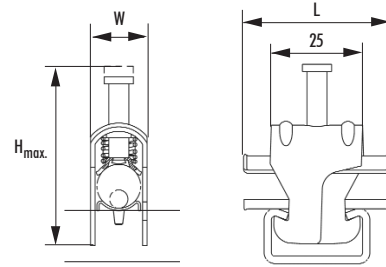
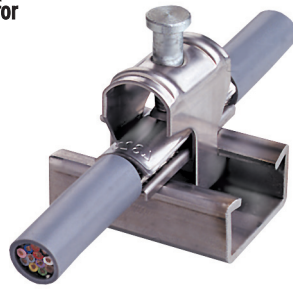
# Shielding terminals of stainless steel A4

to profile bars No. 4382IN and 4383IN



- with clamping screw and spring
- profile bars are used as busbars
- bare cable, uncover shielding part
- same principle as cable fixing brackets
- with spring of niro that makes the electrical contact without damaging the shield

Cannot be used for fastening cables!



**Mounting:** Place the base plate diagonally on the profile bar. Put the bared shielding part of the cable on the base plate. Then push the shielding terminal on the cable shielding and fasten the base part of the terminal on the profile bar by rotating it. When the shielding terminal is released, the spring provides the pressure necessary for the contact.



## Article numbers

Shielding terminals with base plate	43730	43731	43732	43733	43734	43735



## Technical data

	mm	5-10	8-14	13-18	17-21	19-26	25-33
shield $\varnothing$	mm	5-10	8-14	13-18	17-21	19-26	25-33
W	mm	16	19.5	24	29	36.5	45
L	mm	40	40	40	40	40	40
H <sub>max.</sub>	mm	48	50	56	59	64	72
spring pressure	N	21-27	30-76	34-73	30-63	90-124	76-137
Packing unit	pcs	50	50	50	50	50	50



## Accessories

### Earthing terminals

If a separate grounding is needed, an insulated mounting of the rail has to be made with the rail holder No. 4048.

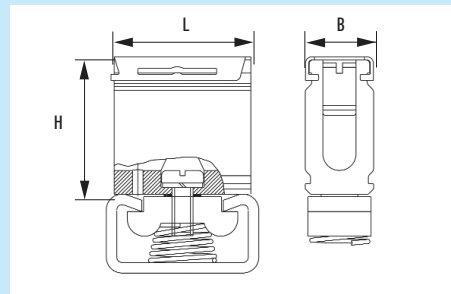


80170

Special earthing terminals are then required for the connection to the profile bars No. 4382IN and 4383IN.

- Terminals of brass
- Anchoring studs of galvanized steel
- Clamping screws of brass, slotted
- With sliding cover of stainless steel, for through conductors
- Packing unit 25 pcs

Nominal cross-section mm<sup>2</sup>  
W x L x H mm



80170/16

80170/50

16 (AWG 6)  
13 x 26 x 26

50 (AWG 2)  
17 x 34 x 30



UL 467 Short-Time-Current-Test

1530A during 6 sec.

3900A during 6 sec.

Rail holder  
of thermosetting  
plastic, light grey



4048

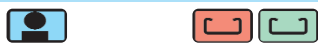
4048

20 x 63 x 11 mm

Packing unit 60 pcs

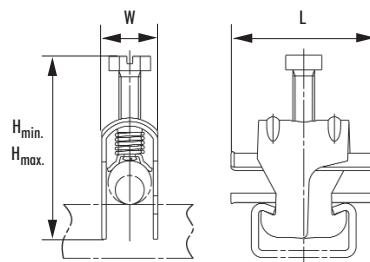
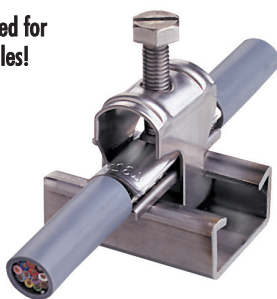
# Shielding terminals of stainless steel A4

to profile bars No. 4382IN and 4383IN



- with screw and with spring of Niro
- profile bars are used as busbars
- for systems where high temperature variation and vibration can occur. Spring to prevent screw from working loose. Adapt force with which screw is tightened to the vulnerability of the shield.
- bare cable, uncover shielding part
- same principle as cable fixing brackets

Cannot be used for fastening cables!



**Mounting:** Place the base plate diagonally on the profile bar. Put the bared shielding part of the cable on the base plate. Then push the shielding terminal with screw loosened as much as possible on the cable shielding and fasten the base part of the terminal on the profile bar by rotating it. Tighten screw carefully in order not to damage the shield.

## Article numbers

Shielding terminals with base plate

43230/F    43231/F    43232/F    43233/F    43234/F    43235/F    43236/F

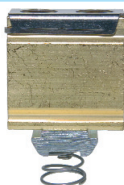
## Technical data

	mm	8-12	12-16	16-20	20-25	25-32	32-40	40-48
shield $\varnothing$	mm	8-12	12-16	16-20	20-25	25-32	32-40	40-48
W	mm	15.5	19.5	24	29.5	37	45.5	56
L	mm	40	40	40	40	40	40	60
H <sub>min.</sub>	mm	37	41	45	50	57	65	88
H <sub>max.</sub>	mm	56	60	64	69	76	84	106
Packing unit	pcs	100	100	100	100	100	50	25

## Accessories

### Earthing terminals

If a separate grounding is needed, an insulated mounting of the rail has to be made with the rail holder No. 4048.



80170

Special earthing terminals are then required for the connection to the profile bars No. 4382IN and 4383IN

- Terminals of brass
- Anchoring studs of galvanized steel
- Clamping screws of nickel-plated brass, slotted
- With sliding cover of stainless steel, for through conductors
- Packing unit 25 pcs

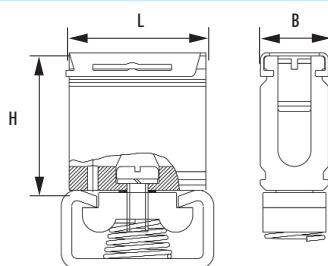
Nominal cross-section    mm<sup>2</sup>  
W x L x H    mm

80170/16

16 (AWG 6)  
13 x 26 x 26

80170/50

50 (AWG 2)  
17 x 34 x 30



UL 467 Short-Time-Current-Test

1530A during 6 sec.

3900A during 6 sec.

**Rail holder**  
of thermosetting plastic, light grey



4048

20 x 63 x 11 mm

Packing unit 60 pcs

4048

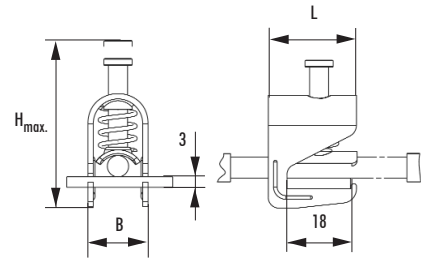
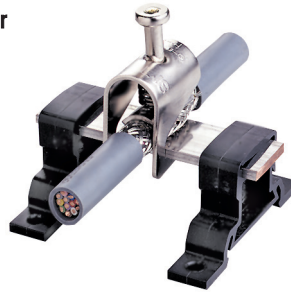
# Shielding terminals

## to busbar 18x3mm



- bare cable, uncover shielding part
- same principle as cable fixing brackets
- of nickel-plated brass
- with spring of steel that makes the electrical contact without damaging the shield

Cannot be used for fastening cables!



**Mounting:** Place the bared shielding part of the cable on the busbar. Press the shielding terminal on the shield and push the base part of the terminal under the busbar. When the shielding terminal is released, the spring provides the pressure necessary for the contact.



### Article numbers

Shielding terminals of nickel-plated brass

43741

43742

43743

43744



### Technical data

	mm	mm	mm	mm	N	pcs
shield $\varnothing$	1.5-6.5	5-11	10-17	16-24		
W	10	17	23	30		
L	25	25	25	25		
H <sub>max.</sub>	40	47	63	78		
spring pressure	8-13	22-31	32-58	37-53		
Packing unit	50	50	50	50		



### Accessories

#### Busbar terminal

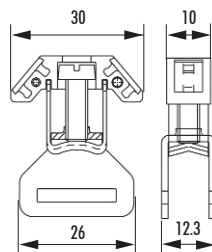
If a separate grounding is needed, an insulated mounting of the rail has to be made with the rail holder No. 30958.



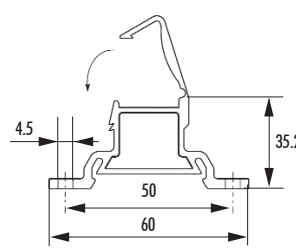
30953E

A special busbar terminal 35mm<sup>2</sup> is then required for the connection.

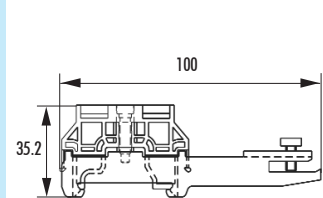
- For mounting on busbars 18x3 mm No. 30959
- Brackets and screws of corrosion-proof steel
- Bow of stainless steel
- Insulating part of polyamide 66, halogen-free
- Marking facilities on both sides with labels RB/6x9
- Packing unit 100 pcs



30953E



30958



30960

30953E

30959

30958

30960

#### Busbar

18x3x1000 mm of tinned electrolytic copper



**Rail holder for insulated mounting** for screwing or clipping on DIN35 rail, of thermoplastic, black. 12 mm wide





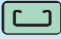



**Rail holder for non-insulated mounting** for clipping on DIN35 rail. Metal bars of galvanized steel. 10 mm wide





## Profile bars

Type	Illustration	kind of material	material width	standard lengths	for shielding terminals
4384 		bare steel	1.5 mm	3 m	Series 43701-43706
		galvanized steel	1.5 mm	3 m	
4382 		aluminium alloy	2 mm	3 m and 6 m	Series 43711-43716
		bare steel	2 mm	3 m and 6 m	Series 43730-43735
		galvanized steel	2 mm	3 m and 6 m	Series 43230/F-43236/F
		stainless Inox A2	2 mm	3 m and 6 m	
4383 		aluminium alloy	3 mm	3 m and 6 m	Series 43711-43716
		bare steel	3 mm	3 m and 6 m	Series 43730-43735
		galvanized steel	3 mm	3 m and 6 m	Series 43230/F-43236/F
		stainless Inox A2	3 mm	3 m and 6 m	


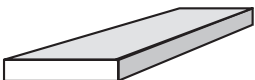


## Combined rail with external flanks according to EN 60715TH35

80291 		aluminium alloy	1.8 mm	2 m, 3 m or 6 m	Series 43711-43716
--	---	-----------------	--------	-----------------	--------------------



## Busbar 18 x 3 mm

30959 		tinned electrolytic copper	3 mm	1 m	Series 43741-43744
--	---	----------------------------	------	-----	--------------------