

## 20 Amp Power Supply Redundancy Module



### Features:

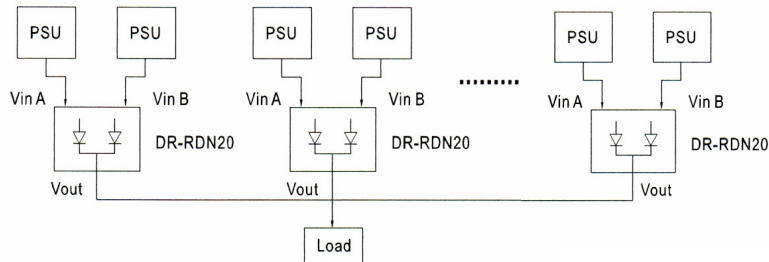
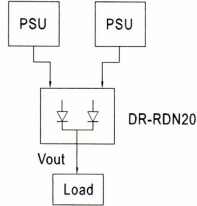
- Suitable for redundant operation of 24V system
- Installed on Din 35mm rail
- Relay contact signal output and LED indicator for input failure alarm
- Cooling by free convection

<b>Model</b>	<b>WPSRM-DR-RDN20</b>	
<b>Output</b>	<b>Reverse Voltage (max.)</b>	30V
	<b>Output Current (max.)</b>	20A
	<b>Voltage Drop</b>	0.5V
	<b>LED Indicators</b>	Two green LEDs indicating each input "OK or fail"
<b>Input</b>	<b>Input voltage range</b>	21~28V
	<b>Number of Inputs</b>	Two
	<b>Input current</b>	20A per input
<b>Function</b>	<b>Input Function Alarm</b>	When input is >20V (+-5%) or 30V(+5%) relay contacts
	<b>Relay Contact Rating (max.)</b>	30VDC, 1A
<b>Environment</b>	<b>Working Temp.</b>	-20~+70°C
	<b>Working Humidity</b>	20~90% RH non condensing
	<b>Storage Temp., Humidity</b>	-40~+85°C, 10~95% RH
	<b>Vibration</b>	10~500Hz, 2G 10 min./1 cycle, period for 60min. each along x,y,z axes
<b>Safety &amp; EMC</b>	<b>Withstand Voltage</b>	Terminal-chassis:0.5KVAC, relay contacts-terminal:0.5VAC
	<b>Isolation Resistance</b>	Terminal-chassis:>100M Ohms/500VDC 25°C 70% RH
	<b>EMI Conduction &amp; Radiation</b>	Compliance to EN55022 (CISPR22) Class B
	<b>EMS Immunity</b>	Compliance to EN61000-4-2,3,4,5,6,8, ENV50204, Heavy industry level, criteria A
<b>Others</b>	<b>MTBF</b>	996.8Khrs min. MIL-HDBK-217f (25°C)
	<b>Dimensions</b>	55.5x125.2x100mm (WxHxD)
	<b>Packing</b>	0.5Kg; 20pcs/11Kg/1.1CUFT
<b>Note</b>	1. All parameters NOT specially mentioned are measured at 24VDC, rated load and 25°C of ambient temperature.	

**Application Notes:** 2. 1+N redundancy: Using more PSUs as the redundant unit to increase the reliability

### 1. 1+1 Redundancy

Using 1 more PSU as the redundant unit



3. Single use: Connecting one PSU to one WPSRM-DR-RDN20 to reduce the stress of the diodes and increase reliability

